

Start-up



Challenge

Why Apply?

- Access to an exclusive and targeted panel of directors of innovation, R & T, R & D, open innovation, responsible for partnerships, development or corporate venture of large space companies.
- Connect with large companies to:
 - ✓ Your technology, your product and/ or service
 - ✓ Get a return on your business from companies in your sector
 - ✓ Realise key business projects with your future partners / clients
 - ✓ Prospecting potential customers
 - ✓ Contract with a major player in your market
 - ✓ You develop internationally by relying on a global leader
 - ✓ To enrich your address book
- Benefit from the reputation of PSW to increase the visibility of your company :
 - Each Laureate will benefit from an unprecedented communication campaign :
 - Promotion of your detailed offer to 200 000 decision makers working in space
 - Media promotion of your product / service via articles and files propelled by the press partners of PSW
 - A private dinner with members of the jury, all experts in Innovation within large groups active in the space industry.

Application Process

December 1st–February 3rd:	Application Phase
February 6th–February 10th :	Selection Phase, analysis of applications
February 13th :	Committee selection meeting, 10 companies will be selected from each category
February 14th-March 13th:	Phase of accompanying selected companies with our partners
March 8th :	Participation at PSW with a pitch of 5 min in front of the large companies

**Attention : Close of applications
Friday 3rd February 2017**

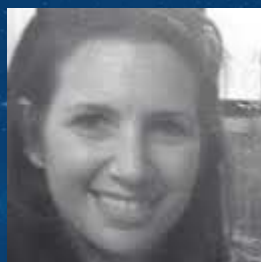
How to apply?

- 1) Register on the PSW website by selecting the « start-up » profile
- 2) Send to info@paris-space-week.com a presentation of your company (powerpoint document limited to 10 slides) according to the recommended frame. [Exemple of recommended frame](#)

Eligibility Criteria

- ✓ Innovative activity in relation to one of the categories (industry or space applications)
- ✓ Minimal proof of concept
- ✓ Looking for customers or partners such as large companies
- ✓ Business model type BtoB ou BtoBtoC

For more Information



**Maxine
BENACOM**

+ 33 (0)1 46 90 22 37
benacom@proximumgroup.com

Among the members of the jury already confirmed:



Mr Laurent Legendre



Mr Ye Yuan



Mr Stephen Gibson

Organised by



With the support of



In press partnership with

